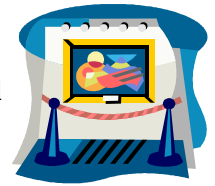


1 5 4

## Masayoshi Nakamura Museum



The Masayoshi Nakamura Art Museum is at Hosoyama in Asao Ward here in Kawasaki.



In 1946 at the age of 22, Masayoshi Nakamura won a prize at Nitten, the Japan Fine Arts Exhibition, and later he was to go on and win their top prize. In 1960 at the youthful age of 35, he became one of the judges for

Nitten. However in the following year Masayoshi Nakamura separated himself from Nitten criticizing the feudal nature of the art society. He then proceeded to follow his own artistic path.

"The Heretical Artist", as some people called Masayoshi Nakamura, moved to Hosoyama in Asao Ward in 1961 and lived there till his death. At the time of his death at the age of 52 in 1977 Masayoshi Nakamura had created various pieces of art such as "Danjo" ("A Man and A Woman").

In 1988 the house he had lived in was opened as a museum. Not only can you view pieces of Nakamura Masayoshi's art you can also spend time in the relaxing nature-abundant garden.

You can get to the Masayoshi Nakamura Art Museum by either of the following ways.

You can take an Odakyu bus destined for "Yomiuri-land" from the Odakyu Station of Shin-yurigaoka and get off the bus at the stop marked Hosoyama (細山).

The other way is to go to Yomiuriland Station on the Odakyu Line and take the bus bound for "Keio Yomiuri-land" and it's a 5 minute walk to the museum.

The Masayoshi Nakamura Art Museum is **NOT** open all year round. It is open from 11:00am to 5:00pm. on Fridays, Saturdays, Sundays and national holidays from September to November, and again from March to May. Entrance fee is ¥500 for adults, ¥300 for university and high school students and ¥200 for junior high and elementary school students.

1 5 5

## Museums in Kawasaki City



Information about accessible museums in the Kawasaki area.



### the Train and Bus Museum

Just last year the Train and Bus Museum was moved from Takatsu Station to Miyazakidai Station and also underwent a renewal. Old trains and carriages of the Tokyu Den-en-toshi Line, buses, aircraft flight simulators are all on display here along with a panoramic scale model car corner. There is plenty to enjoy for both adults and children at the museum.



The Train and Bus Museum is connected to the Miyazakidai Station which you can find on the Den-en-toshi Line. It costs ¥100 for adults, ¥50 for elementary and junior high school students and free for those aged under 6 years old.

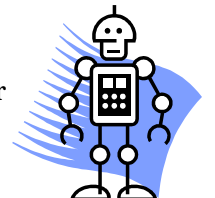
The Train and Bus Museum is closed on Mondays, except when Monday is a national holiday in which case it will remain open on the national holiday and will be closed on the following day instead.

The Train and Bus Museum is open from 10:00am to 5:00pm on weekdays and from 9:30am to 5:00pm on holidays. Last entrance is at 4:10pm.

### Toshiba Science Museum in Saiwai Ward

The first floor of the Toshiba Science Museum is entitled the "Energy and the Environment / Robots". Here you can see **Submersible Maintenance Robot** among other robots at the robot corner. You will find that you can learn in a fun way all about such things as "The Mysterious World of Superconductivity Technology".

The 2nd floor is for the "Information/Communications/Visual Images" and the 3rd floor is for the "Transport/Medical Technology/Semi-conductor".



It is free to enter the Toshiba Science Museum, no reservation is needed. Also, there is an attendant present who will be able to guide people individually. There are explanations in English and Chinese.

The Toshiba Science Museum is closed on Mondays. Opening hours are from 9:00am to 4:45pm. To get to the Toshiba Science Museum take the Tokyu bus No. 27 from JR Kawasaki Station and get off the bus at the stop marked "Komukai Koban Mae" ("小向交番前") and it's just a one minute walk to the Toshiba Science Museum.

1 5 6



# Public School Entry Procedures for Non-Japanese Residents

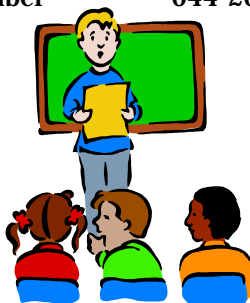


**The procedures needed for foreign residents who wish to send their children to Kawasaki city's municipal elementary or junior high schools.**

Firstly, a child to qualify to enter a municipal elementary school must have been born between the 2nd of April 1998 and the 1st of April 1999. To enter junior high schools the child needs to have an "Expected Graduation Certificate" ("Sotsugyo Mikomi Shoumeisho") dated March 2005 from the elementary school he or she is going to. However, **for children expected to graduate from Kawasaki municipal elementary schools** and who wish to enter Kawasaki municipal junior high schools then no procedures are needed.\*

These are the following procedures that you will need to do.

First, you will need a "School Entry Application" form ("Shugaku Shinseisho") which you can get at and submit anytime to ward offices, branch offices (shicho and shucchosho) as well as at elementary schools and junior high schools, but **for elementary school applications**, please apply **before the 15th of October**. This is to ensure that your child will be able to get his or her "School Entry Medical Checkup". This medical checkup takes place from the 4th to the 30th of November at the elementary schools. If you wish to take this medical checkup please contact the Education Committees Health Education Department (Kyoiku Iinkai Kenko-Kyoiku ka). A letter will be sent to you later informing you of the date, time and place of the medical checkup. The Education Committees Health Education Department can be contacted at the following phone number 044-200-3293.



Issued by The Kawasaki International Association

237-1 Kizuki Gion Cho, Nakahara-Ku, Kawasaki 211-0033 Kawasaki International Center  
Tel 044-435-7000 Fax 044-435-7010 E-mail: [kian@bremen.or.jp](mailto:kian@bremen.or.jp) HP URL: <http://www.bremen.or.jp/kian/>