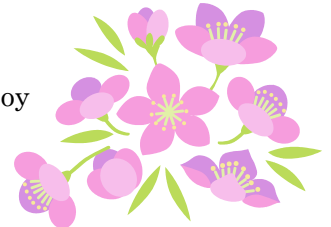


Kawasaki Natural Treasures on Display

(331)

「かわさき花ごよみ展」について

Within the Kawasaki city limits there are quite a few places to go to enjoy beautiful flowers or the other gifts of bountiful nature. Right now you can see some of them in a photography exhibition called KAWASAKI HANA GOYOMI (かわさき花ごよみ), or “A Floral Calendar of Kawasaki”. It features photos of the seasonal flowers and greenery of our fair city, including the cherry trees which have been favorites of photographers for many years now.



From January 30th to February 3rd the exhibition will be at the Kawasaki City Museum, and from February 19th to the 24th it will be at Art Garden Kawasaki in Kawasaki Ward.

The Kawasaki City Museum is a 10-minute bus ride from Musashi-Kosugi Station; get off at the SHIMIN MUSEUM MAE (市民ミュージアム前) bus stop. Art Garden Kawasaki is just a 2-minute walk from the East exit of JR Kawasaki Station. At either place, admission to the exhibition is free.

For more information you can call “k – press” at 03 – 3430 – 6617.

Free Tickets to Women’s Volleyball Games

(332)

ホームタウンスポーツの応援について

The NEC Red Rockets, a women’s volleyball team and one of Kawasaki City’s Hometown Sports Promotion Partner teams, is really showing what it can do in the ‘V-league’. So, why not come out and cheer them on?

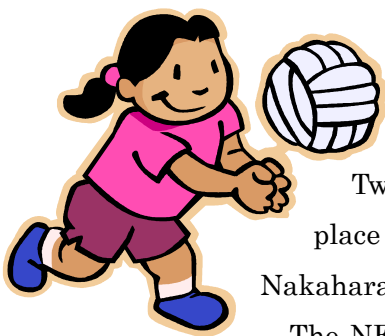
Two more games in the march towards the national championship are to take place on Saturday the 16th and Sunday the 17th of February in Todoroki Arena in Nakahara Ward.

The NEC Red Rockets will play the Okayama Seagulls on the 16th, and the Takefuji Bamboo on the 17th. Please come out and cheer for your hometown team!

Tickets are now on sale through Ticket Pia.

For more information you can call the Sports Section of the Kawasaki City Education Committee (called the KYO-IKU I-IN KAI SPORTS KA, 教育委員会スポーツ課, in Japanese); their phone number is

044 – 200 – 3245.



Shojo Manga Power!

(333)

「市民ミュージアム企画展」について

An exhibit of Japanese comic book art is coming soon to the Kawasaki Museum of Art! It begins on Saturday February 16th, and it's called "Shojo Manga! Girl Power!" in English, or SHOUJO MANGA PAWAA! TSUYOKU, YASASHIKU, UTSUKUSHIKU (少女漫画パワー! つよく・やさしく・うつくしくー) in Japanese. The exhibit features the work of twenty – three manga artists who have been especially influential in the genre of comics for girls, including Tezuka Osamu, Ikeda Riyoko and CLAMP, among others. The 100 artworks on display, some of them the originals, make it clear why girls' comics in Japan are so appealing to so many.



Admission is 800 yen for adults, 500 yen for high school or college students and those 65 years of age or over. Elementary and junior high school students get in free.

The Kawasaki City Museum is about 10 minutes by bus from Musashi-Kosugi station; get out at the SHIMIN MUSEUM MAE (市民ミュージアム前) bus stop.

Questions may be directed to the Kawasaki City Museum; their phone number is 0 4 4 – 7 5 4 – 4 5 0 0 .

Consulting Services for Foreigners on Visa and Others (Free of Charge)

Gyouseishoshi Lawyer Organization is offering the consulting services for foreign residents as the followings. Please feel free to come and consult what you are worrying about now.



Contents of Consultation: Visa problem, Extending period of Stay, Changing status of residence, Naturalization, Permanent visa, Long Term resident visa, Certificate of eligibility, International marriage/divorce, Extraordinary permit of residence by minister of Justice, Establishing a company/branch of foreign company, getting licenses for business, etc.

Date & Time: 3rd Sunday from 2:00pm-4:00pm (Nov/18, Dec/16)

Place: Kawasaki International Center

Please call 044-955-6657 (Urata Office) or 044-811-2436(Takeshita Office) for further information.

Issued by The Kawasaki International Association

2-2 Kizuki Gion Cho, Nakahara-ku, Kawasaki 211-0033 Kawasaki International Center

Tel 044-435-7000 Fax 044-435-7010 E-mail:kiankawasaki@kian.or.jp HP URL:http://www.kian.or.jp/